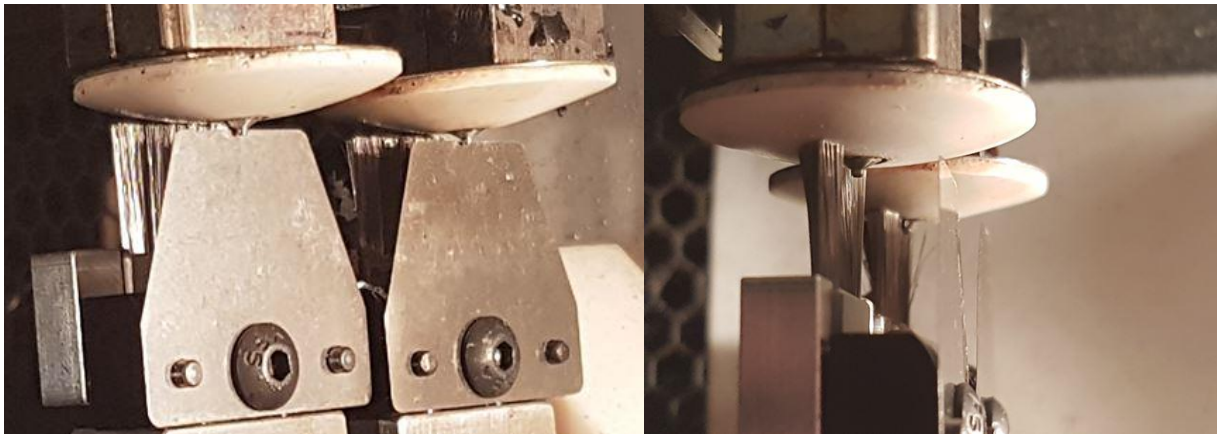
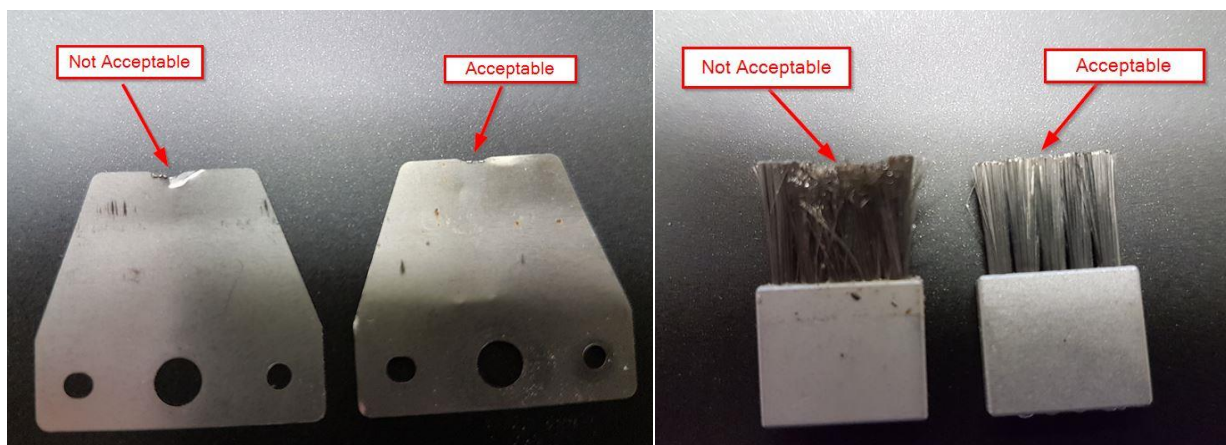


Brush & Flicker: Proper Set-up

Setting the flickers and brushes to the proper height is crucial in extending the life of the tips and maintaining best part quality. Having them set too high can cause premature wear on the tip covers which will in-turn cause lower quality parts. The flickers should be set at a height where they only touch the metal nozzle of the tip and not the white tip cover. The top of the brushes should be set approximately 2-2.5mm higher than the top of the flickers. The correct height will have them contacting a small area of the white tip cover.



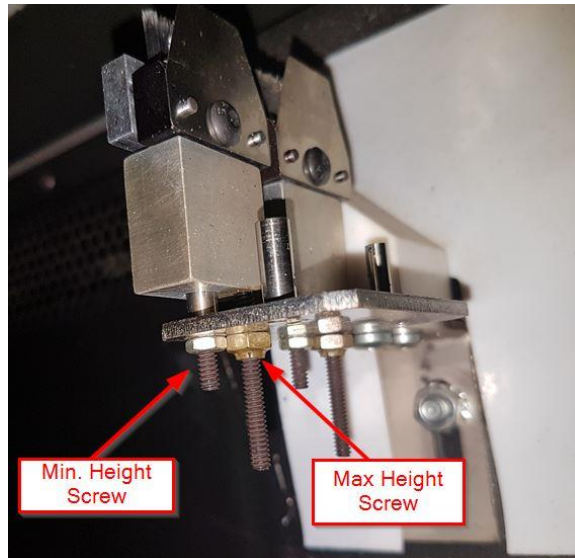
Both flickers and brushes should be replaced when the top edges of them are no longer straight. A small amount of wear on a flicker is acceptable. The flicker should be replaced if it becomes notched or bent. Frayed brushes are acceptable so long as it is even across the top.



Argyle Materials offers Flickers at half the OEM price: \$40/pack of 8, brushes are \$39/ea and sold individually, no need to buy pack of four or Brush/Flicker Kit from OEM.

Adjusting the Brush/Flicker Assembly:

The brush/flicker assembly has 2 screws extending from the bottom side, one for setting the maximum height and one for minimum height. First, loosen both nuts on the screws. You can now turn the screws to adjust the height of the brush/flicker assembly. Adjust both until it is moved up or down to the desired location. Retighten both nuts on the screws to ensure the assembly stays secure and in position.



The brush can be adjusted by loosening the 2 screws on the back side of the brush/flicker assembly, moving the brush to the desired location, and then retightening the screws.

